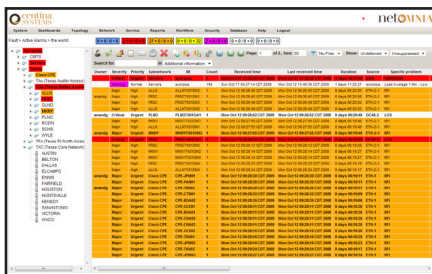


shaping tomorrow with you

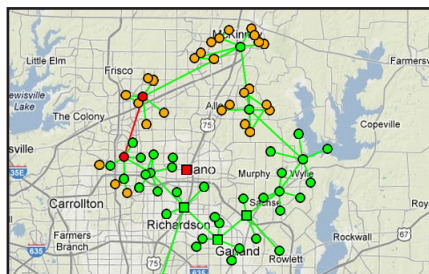
NetOmnia™ Fault Management

Next-Generation Fault and Performance Management

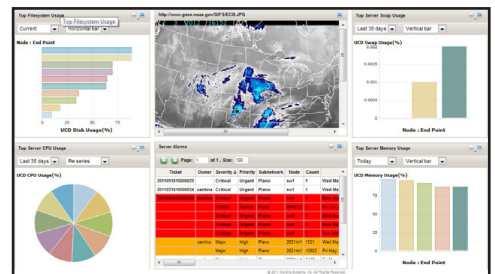
Comprehensive Event Management



Auto-generated Map Views



Configurable Dashboards



Overview

NetOmnia™ Fault Management addresses the major challenges with existing network monitoring solutions by providing a solution that dramatically reduces the ongoing operations costs associated with existing solutions.

Off-the-shelf support for hundreds of devices allows operators to deploy quickly, support new device-types with little-to-no effort and empower the users of the system to configure visualization and automation without the need for highly trained resources.

NetOmnia's Web-based user interface simplifies configuration and administration, allowing service providers to focus on improving network availability and customer experience, reduce troubleshooting and define on-demand dashboards to view the health of the network as needed.

NetOmnia's scalability and usability are redefining Service Assurance to free up resources and optimize operations as never before, allowing users to stop building software and focus efforts on monitoring and improving network performance.

Business Value

- **Reduces operations costs** through faster and easier administration and maintenance
- **Improves customer experience** through faster problem resolution
- **Improves mean time to repair** through flexible automations and notifications to meet real-time needs

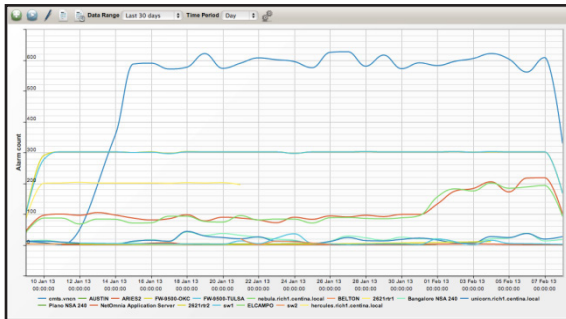
Differentiators

- Off-the-shelf software plug-ins for over 500 devices and EMSs speeds deployment and ongoing administration
- Automatically discovers your network and services
- Report Designer—scheduled generation and delivery
- Easier SLA conformance administration and reporting, point-and-click workflow automation, suppression and threshold configuration
- Web 2.0 user interface, available from any computer—no client administration
- Intuitive, user-friendly interface empowers users to be productive without extensive training
- Topology-based correlation
- Event synchronization to guarantee accuracy of alarms
- Automated GIS topology mapping
- Deploys rapidly and configures without programming—not a toolkit or framework

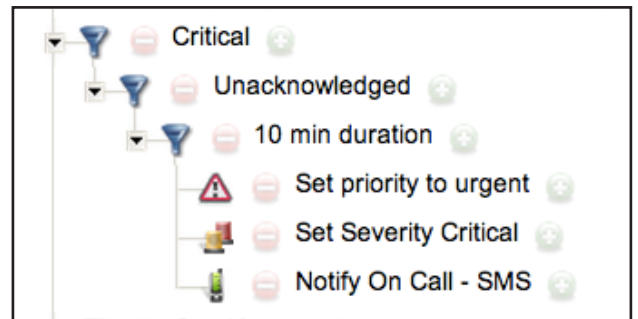
End-to-End Fault Management Across Any Type or Size Network

NetOmnia Fault Management advantages

- Alarm monitoring of every device in the network, regardless of vendor, technology or protocol
- Automated discovery of network elements and inventory
- Connectivity awareness through device heartbeat monitor. If NetOmnia detects a loss of communication, it will reconnect and resynchronize events
- Point-and-click correlation without programming right from the alarm view
- Scheduled maintenance module to suppress alarms from devices undergoing maintenance
- Detailed, top-N and summary reports generated on demand or scheduled and delivered
- Drag-and-drop dashboard creation allows operators to create their own user interface on a single Web page
- Event enrichment removes the need for swivel-chair lookups to troubleshoot issues and determine affected customers
- Event customization, suppression, thresholding
- Configurable alarm correlation and root-cause analysis
- Intuitive Web-based user interface require little or no operator training
- Graphical workflow notification and suppression so rules can be built without programming
- Integrated reporting engine providing configurable detailed, top-N and summary reports
- Auto-generated, dynamic, interactive network maps require no administration
- Web-services API for trouble ticket and inventory management integration
- Scalable to support any size network



Configurable Summary and Top 10 Reports



User-defined Automations & Notifications

Name: Power_Failure_Critical

Enabled: ☒

If Alarms match:

Filter Expression: (Specific problem Matches "power fail.")

Event Threshold: Operator: Equals, Value: 1

That are related by: (Specific problem Matches "generator run.")

Grouping Expression: (Office is the same)

And Occur Within: 2 Minutes

Then: Raise and correlate to a new alarm

New Alarm Properties:

Alarm Field	Value	Delete
Severity	Critical	<input checked="" type="checkbox"/>
Specific problem	Commercial power loss with	<input checked="" type="checkbox"/>
Priority	Urgent	<input checked="" type="checkbox"/>

Clear alarm when: All related alarms clear

Point-and-click Correlation Policies

Node	Source	Source Type	Description	MAC Address	Oper State	Admin State	Speed	Service	Severity override
ARIES2	ARIES2	POP TRAINING DESCR							
ARIES2	VMware Accelerated AMD PCNet Adapter	ethernetCsmacd(6)		00:50:56:a6:93:73	up(1)	up(1)	1 Gbps		
ARIES2	MS_TCP_Loopback_Interface	softwareLoopback(24)			up(1)	up(1)	10 Mbps		
ARIES2	NetOmnia Mediation Server	Node							
unicon.rch1.centira.local	g80	tunnel(131)			down(2)	down(2)	-		
unicon.rch1.centira.local	g8	softwareLoopback(24)			up(1)	up(1)	10 Mbps		
unicon.rch1.centira.local	g8h1	ethernetCsmacd(6)		00:22:19:8c:72:2b	down(2)	down(2)	-		
unicon.rch1.centira.local	g8h2	ethernetCsmacd(6)		00:50:56:c0:00:08	up(1)	up(1)	-		
unicon.rch1.centira.local	g8h3	rmonEther					-		
unicon.rch1.centira.local	g8h4	unicon.rch1.centira.local					-		
unicon.rch1.centira.local	g8h5	ethernetCsmacd(6)		00:50:29:12:09:08	up(1)	up(1)	1 Gbps		
unicon.rch1.centira.local	g8h6	ethernetCsmacd(6)		00:50:56:c0:00:01	up(1)	up(1)	-		
unicon.rch1.centira.local	g8h7	ethernetCsmacd(6)		00:50:56:c0:00:08	up(1)	up(1)	10 Mbps		
unicon.rch1.centira.local	g8h8	rmonEther					-		
unicon.rch1.centira.local	g8h9	ethernetCsmacd(6)		00:50:56:c0:00:01	up(1)	up(1)	10 Mbps		
unicon.rch1.centira.local	g8h10	ethernetCsmacd(6)		00:50:56:c0:00:01	up(1)	up(1)	-		
unicon.rch1.centira.local	g8h11	ethernetCsmacd(6)		00:50:56:c0:00:01	up(1)	up(1)	1 Gbps		
unicon.rch1.centira.local	g8h12	ethernetCsmacd(6)		00:50:56:c0:00:01	up(1)	up(1)	1 Gbps		

Real-time Inventory Discovery

Comprehensive Multivendor Performance Assurance and SLA Management

NetOmnia is the next generation in service assurance and service quality management. This modular software suite can dramatically improve network performance, Service-Level Agreement (SLA) conformance, and customer experience. NetOmnia offers a single solution for managing any infrastructure: network, systems, applications, facilities and security.

Low Maintenance, Dynamic, Technology-Independent

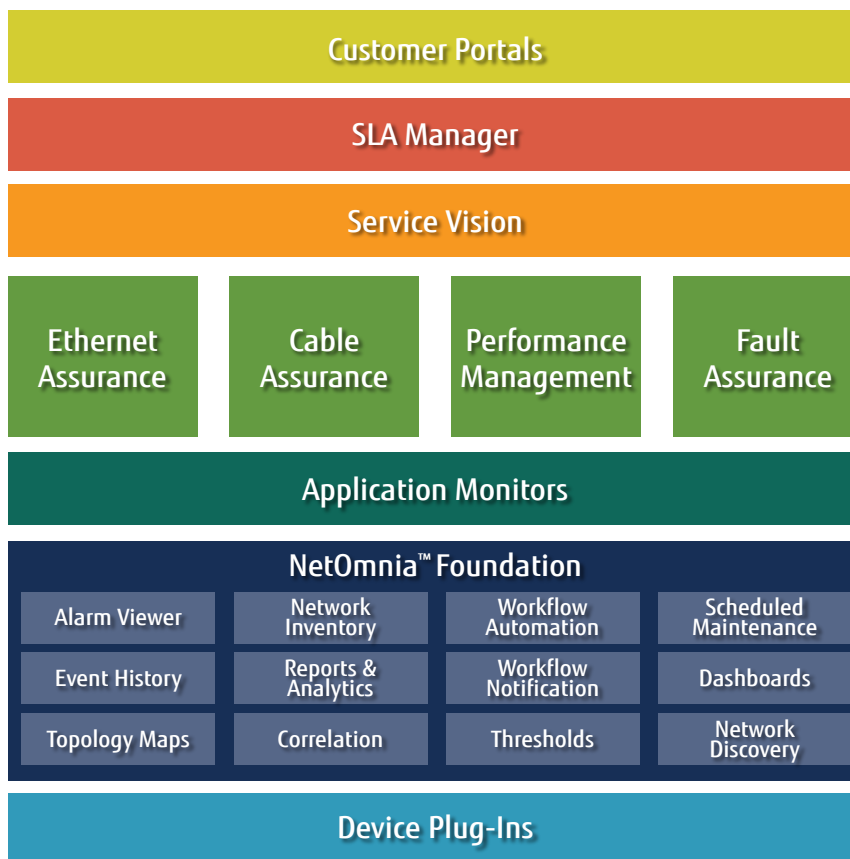
NetOmnia deploys rapidly and can be maintained and extended without programming or advanced training. The system also offers unprecedented scalability to manage any size network. End-to-end services can be automatically discovered and kept current to monitor Key Performance Indicators (KPIs) and automate notifications based on configurable thresholds. Network operations technicians can configure a custom service assurance solution to view, monitor and report on network health and performance in real time.

With NetOmnia, service providers experience:

- Dramatically lower solution deployment times
- Reduced ongoing configuration, customization and maintenance workload
- Simplified advanced configuration via unique point-and-click GUI interface
- Easy modification of system rules on-the-fly
- Increased productivity with minimal training
- Standard, no-maintenance Web browser access

NetOmnia Modules

- **SLA Manager** – SLA creation based on service quality and availability; conformance period; and warning and violation notifications
- **Service Vision** – Self-maintaining auto-discovery and mapping of network services topology from a variety of sources, regardless of vendor
- **Ethernet Assurance** – Monitoring and visualization of quality metrics such as availability, delay, jitter, frame loss, and custom-defined metrics
- **Cable Assurance** – Comprehensive monitoring of the cable broadband infrastructure from CMTS to cable modem/MTA with core-to-customer passive network mapping and high-speed polling to identify issues in seconds
- **Performance Management** – Real time configuration of polling, thresholds, automations and notifications to meet the changing needs of today's dynamic networks
- **Fault Management** – Alarm monitoring of every device in the network, regardless of vendor, technology or protocol



Fujitsu Network Communications, Inc.

2801 Telecom Parkway, Richardson, TX 75082

Tel: 888.362.7763

us.fujitsu.com/telecom