

Fujitsu
ActivateNow
2021

Fujitsu's Technology Vision and Strategy

: the View from the CTO

Vivek Mahajan
CTO
Fujitsu Limited

FUJITSU



The World at an inflection point



Fujitsu
Technology and
Service Vision
2021

Technology Areas that underpin Key Focus Areas



Vertical Areas

Sustainable Manufacturing

Circular, traceable manufacturing with consideration to the environment and people

Consumer Experience

Payments, logistics and retail that provide consumers with diverse experiences

Healthy Living

Supporting all kinds of people in living in ways that promote wellbeing

Trusted Society

Creating communities that embody safe, secure and resilient

Horizontal Areas

Digital Shifts

Data-Driven Work Style Reform

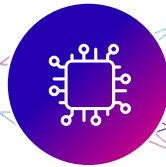
Business Applications

Cloud Integration Applications

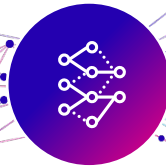
Hybrid IT

Cloud Security

Key Technologies



Computing



Network



AI



Data & Security



Converging Technologies

Computing

Super Computer "Fugaku"

World's 1st Computing Performance and Low Energy Consumption

High Performance Computing

Providing Processors, Middleware, Software, and Solutions as a Platform

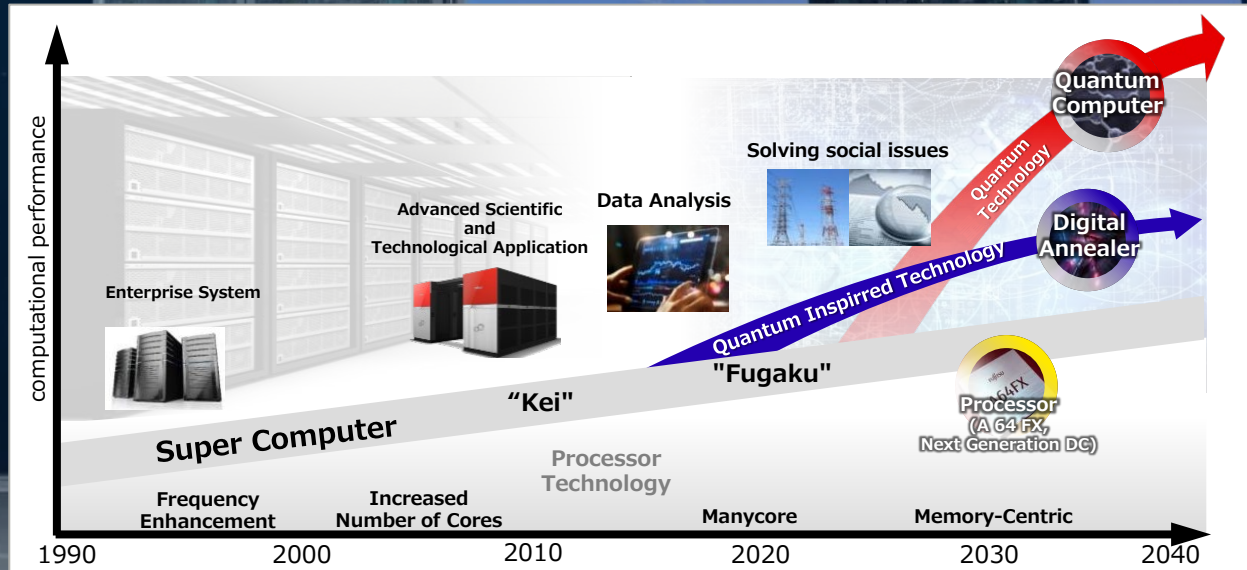


photo credit: RIKEN

© 2021 Fujitsu Limited

Quantum Computing

Digital Annealer

Leading the way with quantum-inspired technology for combinatorial optimization problems

Quantum Computer

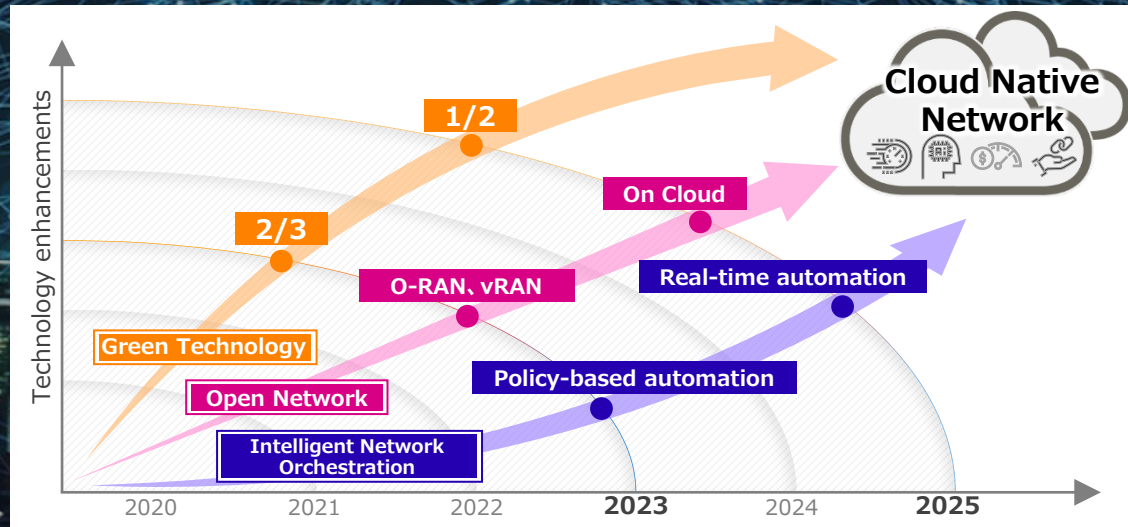
Accelerate practical application by researching and development hardware, software, algorithms, solutions and applications in collaboration with world-class partners



Network

Enable across the world to deploy true end-to-end fully virtualized cloud native networks

- **Open Network:** 5G/Beyond, O-RAN, vRAN, High-efficiency Radio Unit, Public Cloud (AWS, Microsoft Azure)
- **Intelligent Network Orchestration:** AI/Machine Learning, Integrated Security
- **Green Technologies:** All-Photonics and Photoelectric Conversion



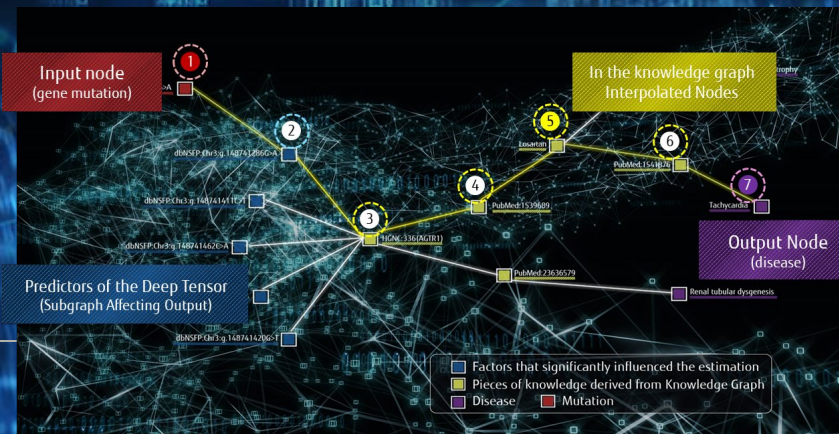
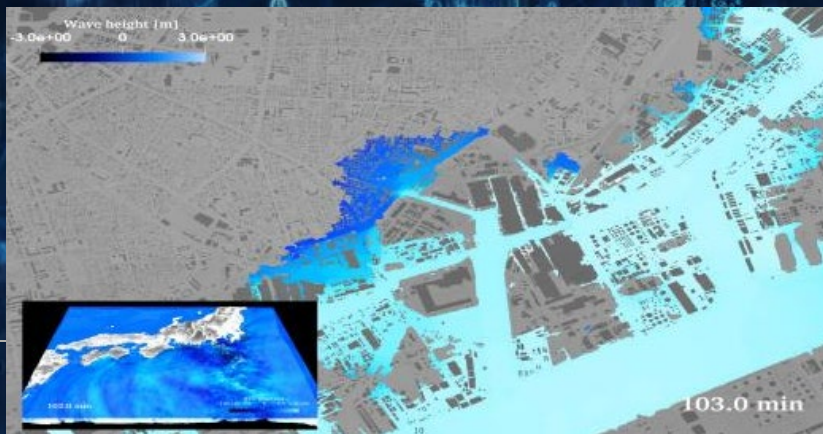
AI

Take global initiatives with technologies that enable "better AI society"

- AI ethics
- AI large-scale simulation: Tsunami inundation prediction

Discovery AI enables creative collaboration with people

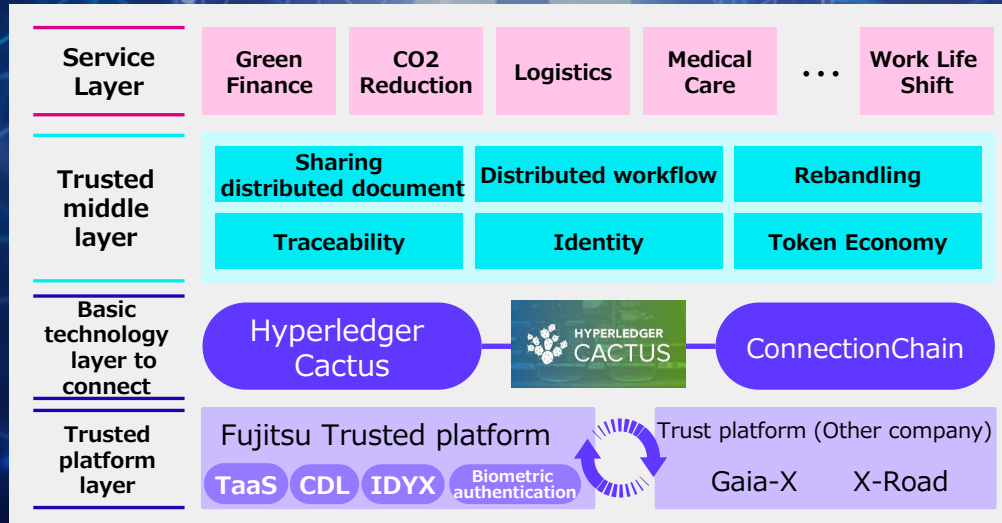
- Explainable AI, Causal AI: Genomic medicine
- Behavior Detection: Gymnastics scoring support system



Data & Security

Digital trust technology supports resilient and secure data distribution platform for risk management in the zero-trust era

- Blockchain: Hyperledger-Cactus
- Data Traceability: CDL "Chain Data Lineage"
- Digital Identity: IDYX "IDentityY eXchange"
- Data Authenticity Assurances: TaaS "Trust as a Service"



Converging Technologies NEW

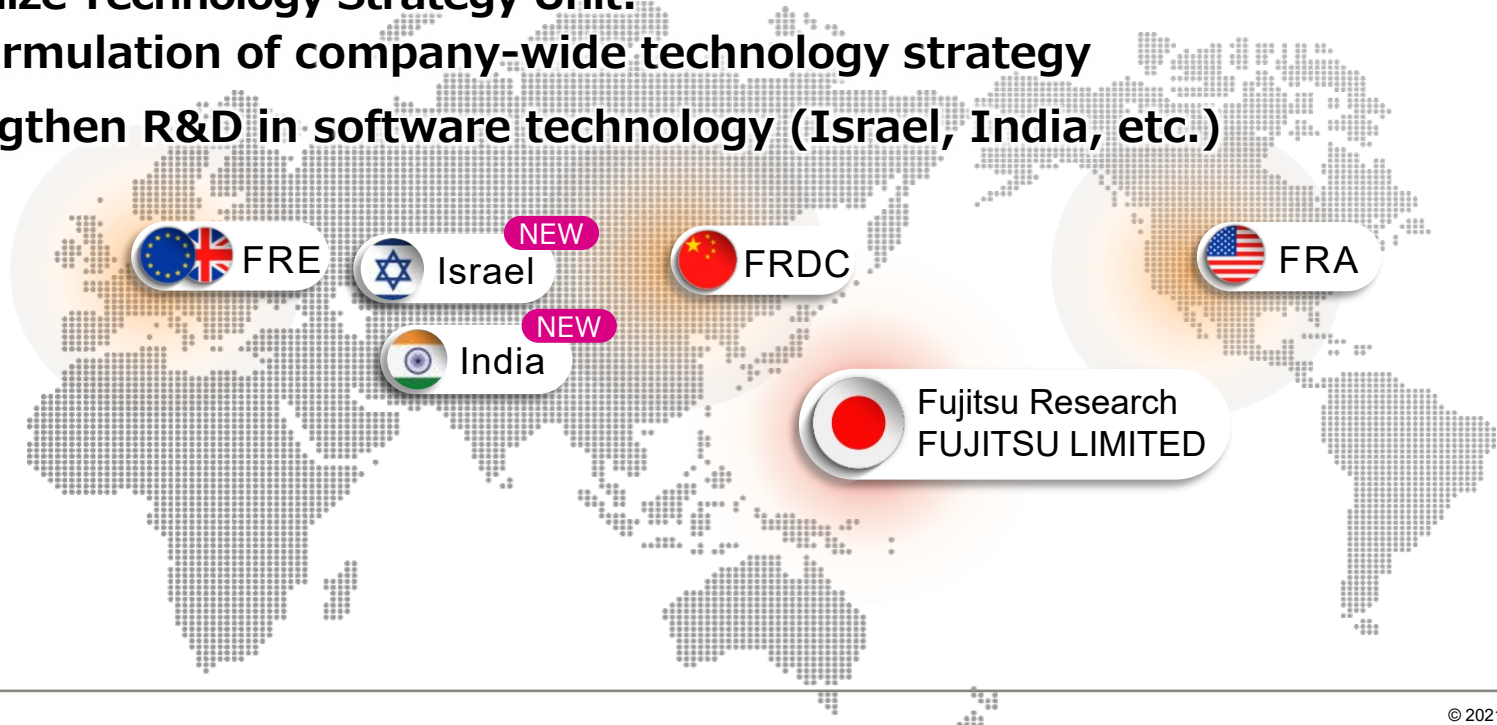
Cutting-Edge Digital technology x Humanities & Social Sciences

- Human sensing: AI image analysis and behavioral science
- Social Digital Twin: Real-time Data Processing x Behavioral Economics/Social Sciences



Strengthen Global R&D Organization

- Promotion of open innovation
- Fujitsu Laboratories integrated into Fujitsu :Renamed to Fujitsu Research
- Organize Technology Strategy Unit:
For formulation of company-wide technology strategy
- Strengthen R&D in software technology (Israel, India, etc.)



A young green seedling with two leaves growing out of dark soil, with a bright sun in the background.

**Contribute to society
through global technology leadership**

Thank you

